



# Early Head Start Program

Annual Report 2023



# Dignity Health – California Hospital Medical Center



“Health is more than not being sick; it is well-being in mind, body, and community”

California Hospital Medical Center (CHMC), a non-profit community teaching hospital, has been serving the needs of central, south, and downtown Los Angeles since 1887. As one of our city's major birthing centers, CHMC has long been considered a center of excellence in its work with pregnant women, infants and children.

In 1997, CHMC established our Early Head Start program, in collaboration with the University of California, Los Angeles. Located within the Hope Street Margolis Family Center and adjacent to the hospital campus, Early Head Start is a core component of CHMC's population health work.

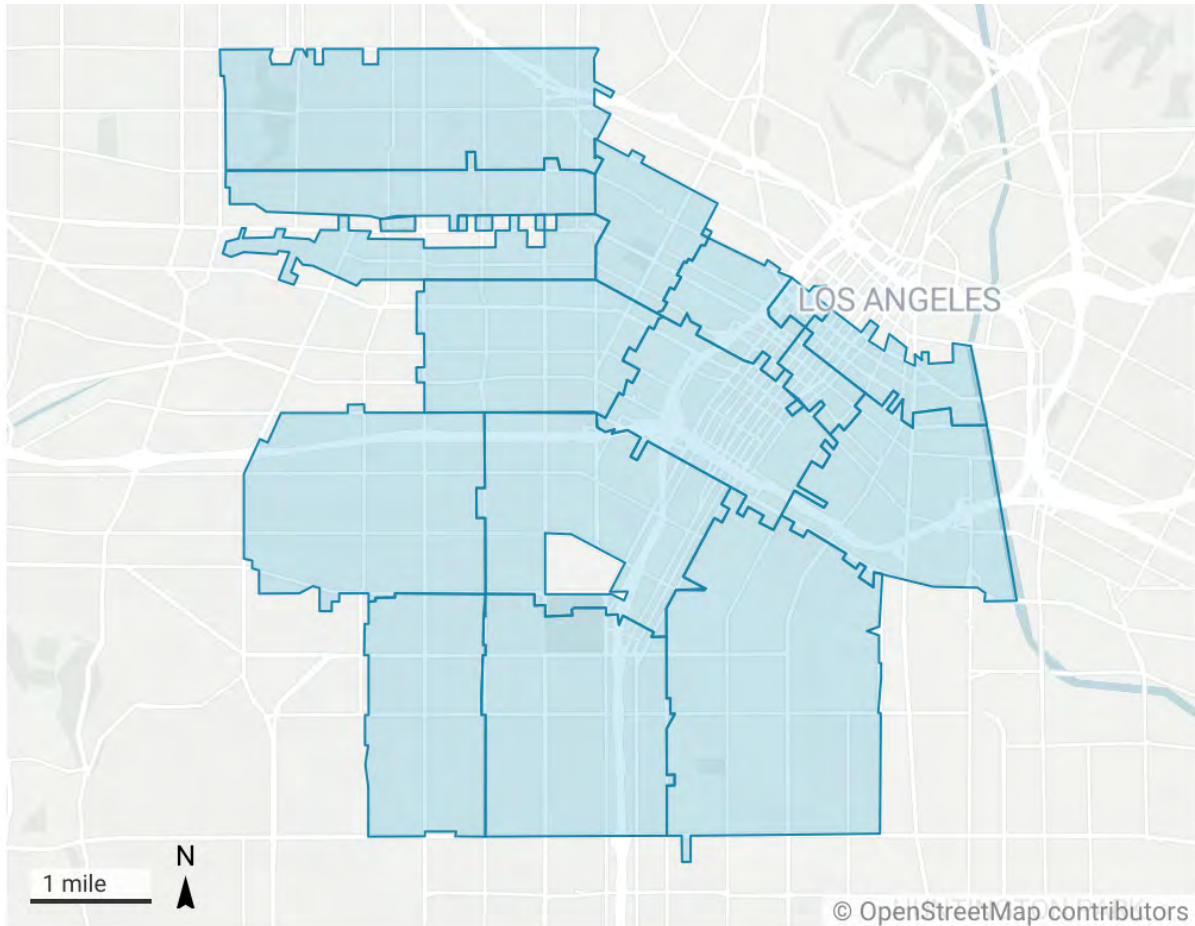
Early Head Start provides a continuum of early care and education, health and nutrition, mental health, disabilities, and family services that support young children and their families.


**The goals of Early Head Start are to:**

- Enhance the capacity of parents and families to nurture and care for their children.
- Promote children’s overall health, development, school readiness, and academic achievement.
- Strengthen existing service delivery networks and foster community partnerships, by developing services that are accessible and responsive to the community we serve.

# Service Area

California Hospital Medical Center  
Early Head Start Program



 Hope St. Service Area

The EHS geographic area is roughly bounded on the north by the 101 Freeway; on the east by Alameda Street; on the south by 54th Street; and on the west by the 110 Freeway to the 10 Freeway to Western Ave. to 9th St. to Hoover St. to 3rd St. and to Western Ave.

# Community Needs Assessment

| Indicator  | EHS Service Area | Los Angeles County |
|--|------------------|--------------------|
| <b>Income/Poverty</b>                              |                  |                    |
| Households with annual incomes under \$15,000      | 19%              | 10%                |
| Median household Income                            | \$44,913         | \$76,367           |
| Families with children 0-5 years living in poverty | 35%              | 18%                |
| Children eligible for EHS services                 | 11,558           |                    |
| <b>Educational Attainment</b>                      |                  |                    |
| Adults with less than a high school degree         | 47%              | 33%                |
| <b>Language: Households Below Poverty</b>          |                  |                    |
| Home Language: Spanish                             | 25%              | 16%                |
| <b>Health/Prenatal Care</b>                        |                  |                    |
| Low Birth Weight Infants                           | 10%              | 9%                 |
| Prenatal Care in First Trimester                   | 83%              | 87%                |
| Births to women below poverty                      | 36%              | 21%                |
| <b>Childhood Disabilities</b>                      |                  |                    |
| Children with identified disabilities, 0-5 years   | 3,676            |                    |
| <b>Childcare</b>                                   |                  |                    |
| Shortfall of spaces for children 0-3               | 4,198            |                    |

Community Needs Assessment 2023

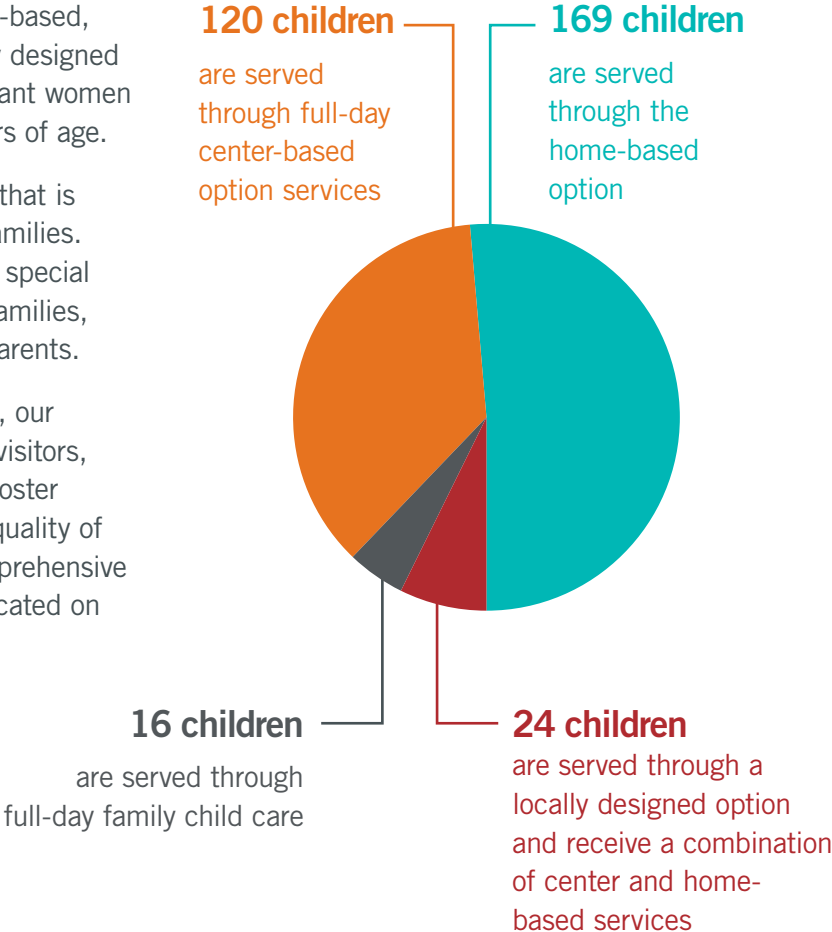
# EHS Program Overview

Our EHS program provides full-year home-based, center-based, family childcare, and locally designed option services for 329 low-income pregnant women and families with young children, 0-3 years of age.

We offer a continuum of program options that is responsive to the varied needs of young families. Enrollment priorities include children with special needs, children in foster care, homeless families, teen parents, and non-English speaking parents.

Working in close partnership with families, our multidisciplinary team of teachers, home visitors, nurses, social workers and psychologists foster children’s development and enhance the quality of life for families, ensuring access to a comprehensive network of services, many of which are located on or adjacent to the CHMC campus.

# Early Head Start Program Options



# EHS Program Enrollment & Attendance

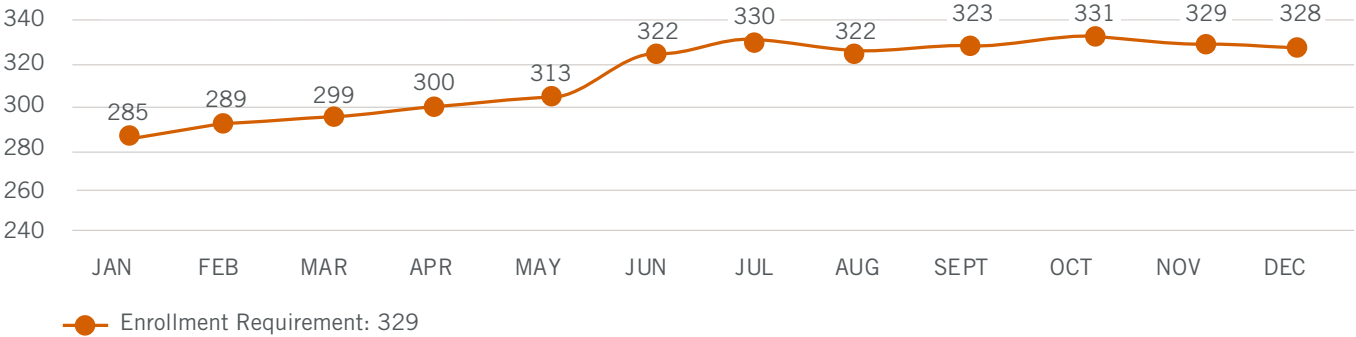
Funded Enrollment:  
**329**  
children and pregnant women

Services were provided to  
**481**  
children and  
**41**  
pregnant women

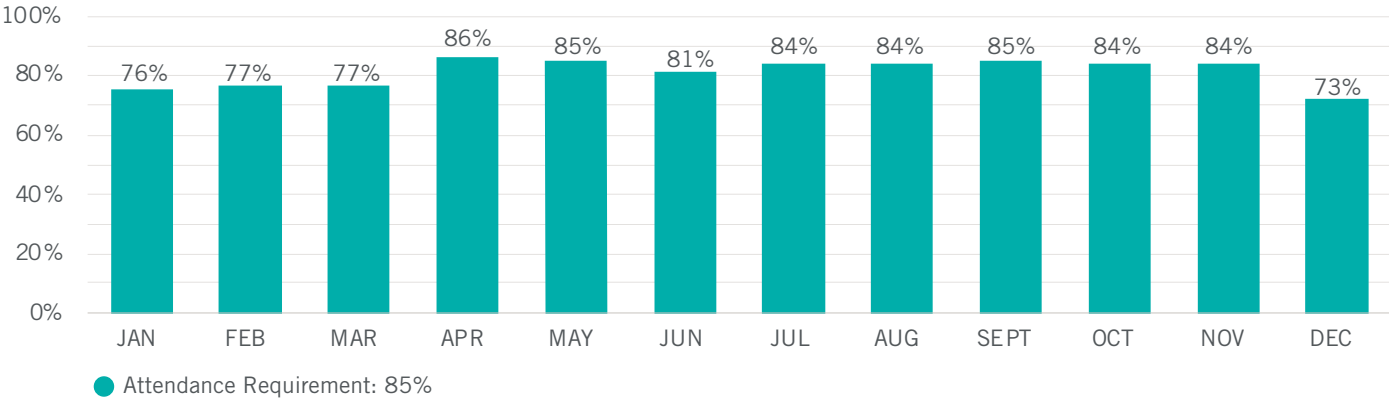


# EHS Program Enrollment & Attendance

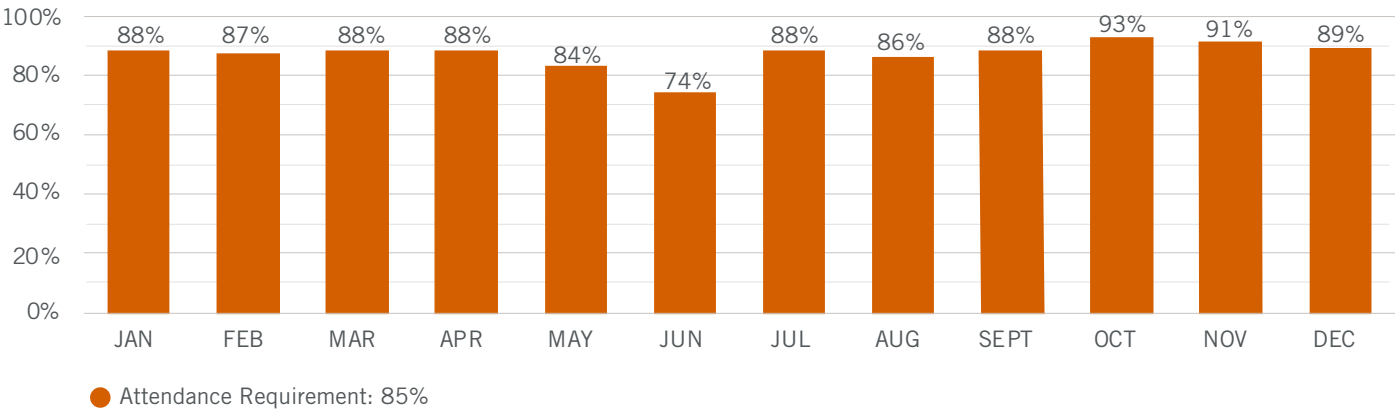
## 2023 Enrollment



## 2023 Center-Based Attendance



## 2023 Family Childcare Attendance



# Health and Special Needs Services

EHS provided services for children with a variety of special needs, including:

- Speech and language impairment
- Global developmental delay
- Specific learning disabilities
- Autism
- Health-related concerns
- Hearing and vision impairments
- Traumatic brain injury



**25.7%**  
of children served in 2023  
had special needs, nearly double  
the 10% requirement

**100%**

Children and pregnant women with an ongoing source of continuous and accessible health care and insurance

**94%**

Children up-to-date on a schedule of prevention and primary healthcare

**95%**

Children with up-to-date immunizations

**28%**

Children diagnosed with a chronic health condition

**94%**

Children with up-to-date preventative oral health care

**100%**

Pregnant women receiving prenatal health care

**100%**

Children who received or are receiving medical treatment for identified conditions

# School Readiness

## Goals

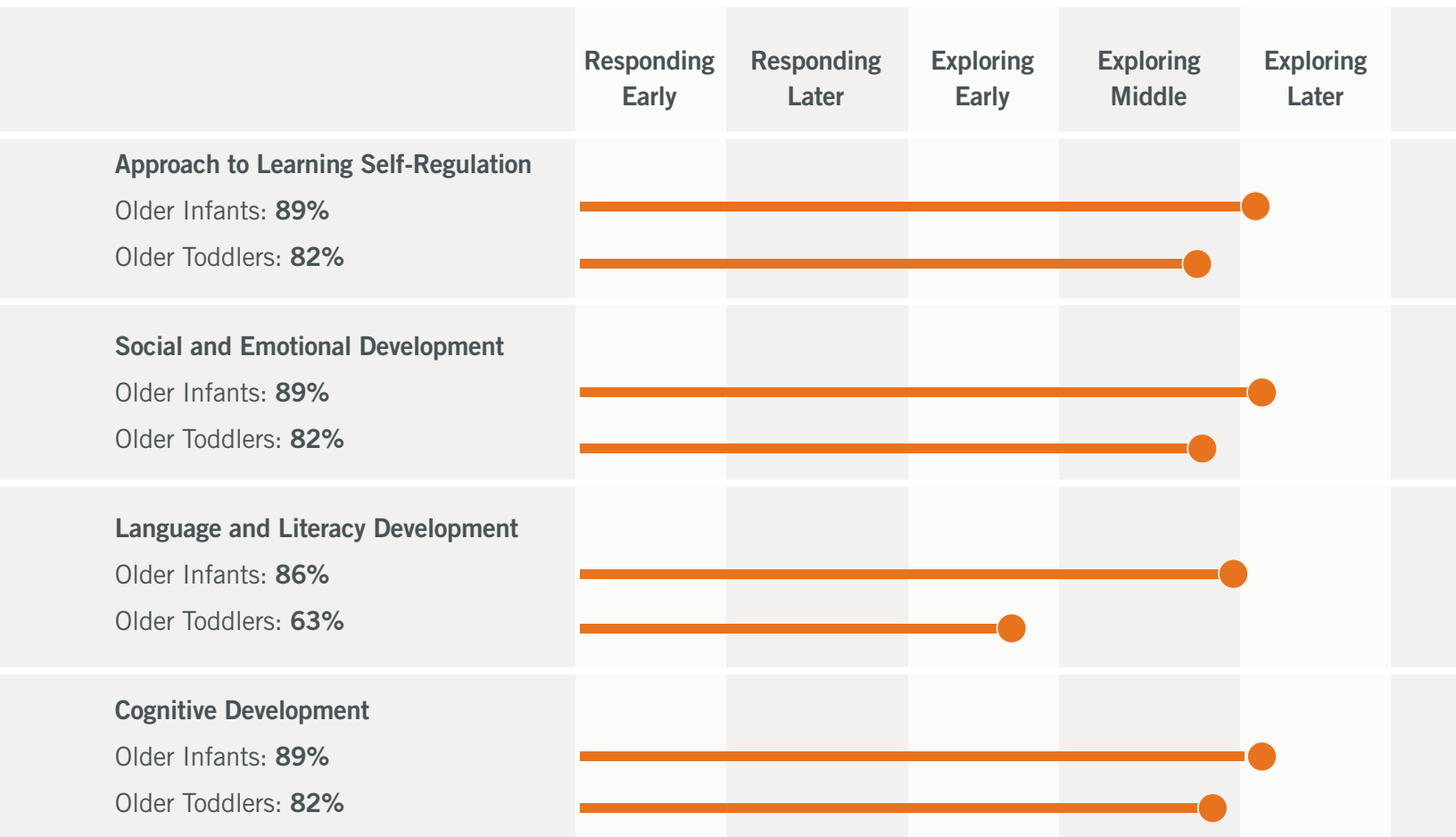
- Children will learn about themselves and their feelings
- Children will learn about others
- Children will learn about communicating
- Children will acquire thinking skills
- Children will learn about moving and doing

## Our Philosophy

School readiness is rooted in the interactions and relationships that young children have with their caregivers and early environments.

## Our Approach

We provide a continuum of health, mental health, family support, and early childhood education services that enriches children’s environments, promotes early development, and supports parents in their role as their child’s first teacher.



Children’s development is assessed on a quarterly basis throughout the year. Desired Results Developmental Profile (2015) quarterly mean domain subscale scores reflect age-appropriate developmental growth for children in all age groups.



# Parent Involvement Opportunities

**1** Volunteering within the EHS program and California Hospital Medical Center

**2** Family Literacy Classes

**3** Socialization and Play Groups

**4** Educational Workshops and Classes

**5** Healthy Lifestyle Activities:  
Yoga and Cooking Classes

**6** Health, Self Assessment, and Community  
Assessment Committees

**7** Parent Committee and Policy Council



## Parent Voices

“The program has been a big help to my children's development. As parents, we learn along with our children.”

“My child has learned so much and has become independent. I know he's in good hands and I know he is safe. This allows me to work and have peace of mind.”

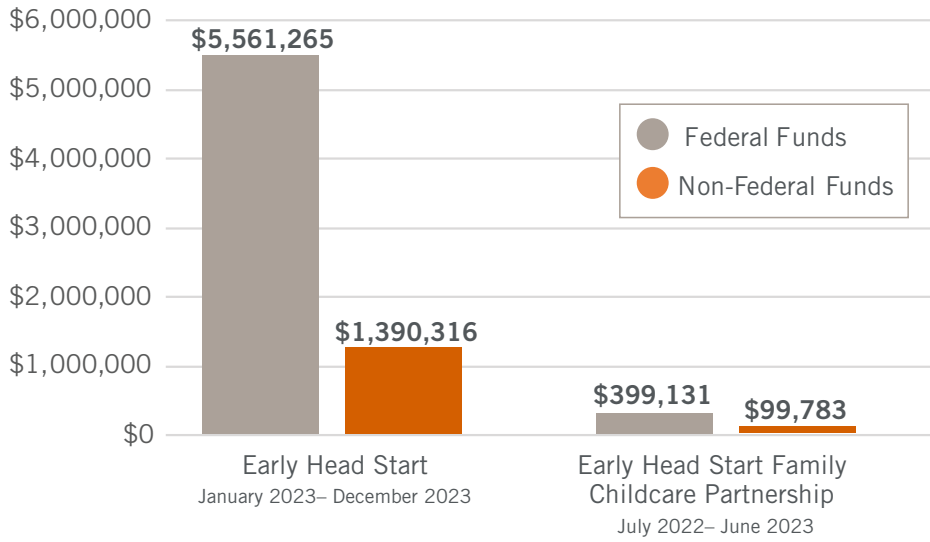
“We, as parents, feel supported. Hope Street has helped me become more involved in my child's learning and education.”

“I'm extremely thankful for the opportunities this program has provided my family. It's helped our development in many ways.”

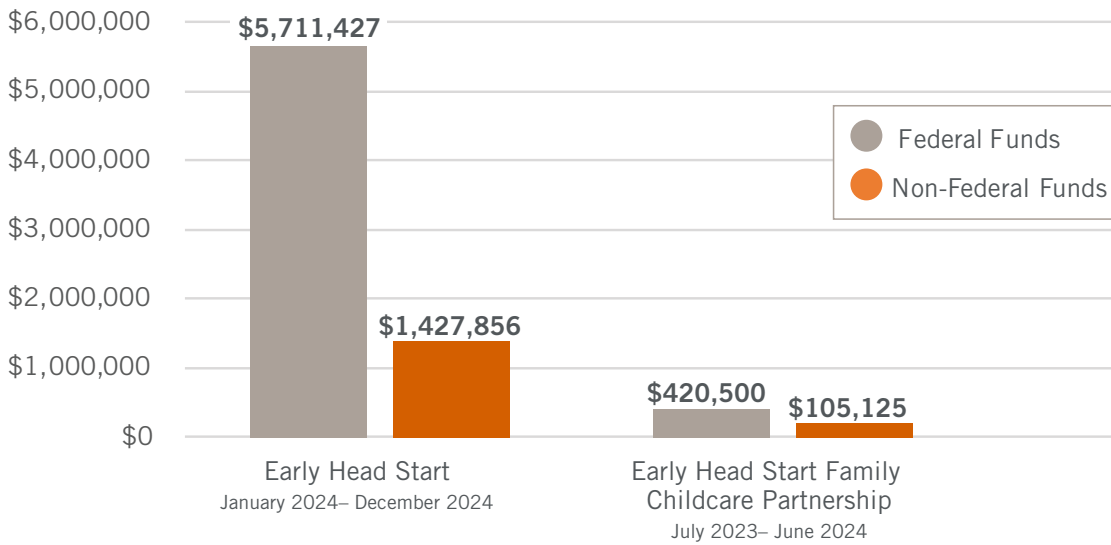
“I wish that every parent could have the opportunity to become part of this program. It's given me confidence.”

“My child's language skills have improved and he has learned to socialize with other children.”

# EHS End of Year Financials



# EHS FY2023 Budget Projections



## Non-Federal Sources

- California Department of Social Services (CCTR & FCCHEN)
- The Atlas Family Foundation
- Carl & Roberta Deutsch Foundation

# Audits & Reviews

2022

California Department of Education;  
California Department of Social  
Services – No Findings

2023

California Department of Education; California  
Department of Social Services; Ernst and Young  
CommonSpirit System Wide Audit – No Findings





**HOPE** STREET  
MARGOLIS  
FAMILY CENTER

